

KINGBRIGHT SMD LED Lamps



DIMENSIONS (IN.)

Illumination

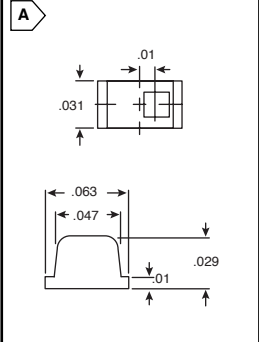
Kingbright

SURFACE MOUNT LED LAMPS

0603

• Forward current: 20mA

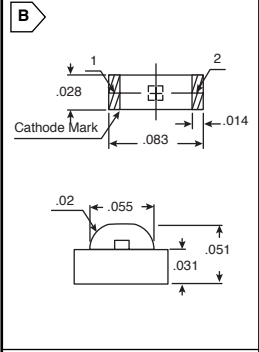
MOUSER STOCK NO.	Kingbright Part No.	Fig.	Color		Typ. Forward Voltage (V)	Luminous Intensity		Peak Wave-length (nm)	Viewing Angle	Price Each					CALL FOR QUOTE
			LED	Lens		Min.	Typ.			1	100	500	1000	2000+	
604-APT1608EC	APT1608EC	A	Red	Water Clear	2	5	12	625	120°	.10	.09	.08	.07		
604-APT1608NW	APT1608NW	A	Orange	White Diff.	2.1	5	12	610	120°	.14	.11	.10	.07		
604-APT1608PGW	APT1608PGW	A	Green	White Diff.	2.3	2	5	555	120°	.13	.11	.09	.06		
604-APT1608PYW	APT1608PYW	A	Yellow	White Diff.	2.1	3	8	585	120°	.14	.11	.10	.07		
604-APT1608QGW	APT1608QGW	A	Green	White Diff.	2.2	3	12	565	120°	.13	.11	.09	.06		
604-APT1608SEC	APT1608SEC	A	Orange	Water Clear	2	80	200	601	120°	.32	.25	.22	.16		
604-APT1608SECK	APT1608SECK	A	Orange	Water Clear	2.1	50	160	601	120°	.25	.20	.17	.12		
604-APT1608SEW/E	APT1608SEW/E	A	Red	White Diff.	2	60	200	621	120°	.41	.33	.28	.21		
604-APT1608SGC	APT1608SGC	A	Green	Water Clear	2.2	3	10	568	120°	.10	.09	.08	.07		
604-APT1608SRCPRV	APT1608SRCPRV	A	Red	Water Clear	1.9	40	100	640	120°	.16	.13	.11	.08		
604-APT1608SURC	APT1608SURC	A	Red	Water Clear	1.9	70	150	628	120°	.32	.26	.22	.16		
604-APT1608SURCK	APT1608SURCK	A	Red	Water Clear	2	50	100	630	120°	.25	.20	.17	.12		
604-APT1608SYC	APT1608SYC	A	Yellow	Water Clear	2	40	80	588	120°	.32	.25	.22	.16		
604-APT1608SYCK	APT1608SYCK	A	Yellow	Water Clear	2	30	60	590	120°	.25	.20	.17	.12		
604-APT1608YC	APT1608YC	A	Yellow	Water Clear	2.1	3	8	588	120°	.19	.15	.13	.10		



0802

• Forward current: 20mA

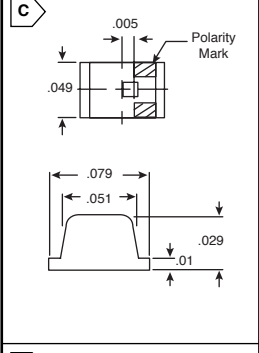
MOUSER STOCK NO.	Kingbright Part No.	Fig.	Color		Typ. Forward Voltage (V)	Luminous Intensity		Peak Wave-length (nm)	Viewing Angle	Price Each					CALL FOR QUOTE
			LED	Lens		Min.	Typ.			1	100	500	1000	2000+	
604-APJA2107EC	APJA2107EC	B	Red	Water Clear	2	5	12	625	120°	.21	.17	.15	.12		
604-APJA2107PGC	APJA2107PGC	B	Green	Water Clear	2.3	2	5	555	120°	.21	.17	.15	.11		
604-APJA2107SEC	APJA2107SEC	B	Orange	Water Clear	2	50	250	601	120°	.41	.33	.28	.21		
604-APJA2107SECK	APJA2107SECK	B	Orange	Water Clear	2.1	80	200	601	120°	.30	.24	.20	.15		
604-APJA2107SEW/E	APJA2107SEW/E	B	Red	White Diff.	2	80	200	621	120°	.50	.40	.34	.25		
604-APJA2107SGC	APJA2107SGC	B	Green	Water Clear	2.2	3	10	568	120°	.21	.17	.15	.11		
604-APJA2107SRCPRV	APJA2107SRCPRV	B	Red	Water Clear	1.9	40	70	640	120°	.23	.18	.16	.11		
604-APJA2107SURC	APJA2107SURC	B	Red	Water Clear	1.9	80	150	628	120°	.41	.33	.28	.21		
604-APJA2107SYC	APJA2107SYC	B	Yellow	Water Clear	2	40	60	588	120°	.41	.33	.28	.21		
604-APJA2107SYCK	APJA2107SYCK	B	Yellow	Water Clear	2	20	60	590	120°	.30	.24	.20	.15		
604-APJA2107YC	APJA2107YC	B	Yellow	Water Clear	2.1	3	8	588	120°	.21	.17	.15	.11		



0805

• Forward current: 20mA

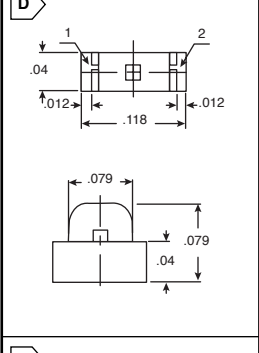
MOUSER STOCK NO.	Kingbright Part No.	Fig.	Color		Typ. Forward Voltage (V)	Luminous Intensity		Peak Wave-length (nm)	Viewing Angle	Price Each					CALL FOR QUOTE
			LED	Lens		Min.	Typ.			1	100	500	1000	2000+	
604-APT2012EC	APT2012EC	C	Red	Water Clear	2	5	12	625	120°	.13	.11	.09	.06		
604-APT2012NW	APT2012NW	C	Orange	White Diff.	2.1	5	12	610	120°	.14	.11	.10	.07		
604-APT2012PGW	APT2012PGW	C	Green	White Diff.	2.3	2	5	555	120°	.13	.11	.09	.06		
604-APT2012PYW	APT2012PYW	C	Yellow	White Diff.	2.1	3	8	585	120°	.14	.11	.10	.07		
604-APT2012QGW	APT2012QGW	C	Green	White Diff.	2.2	3	12	565	120°	.13	.11	.09	.06		
604-APT2012SEC	APT2012SEC	C	Orange	Water Clear	2	40	200	601	120°	.32	.25	.22	.16		
604-APT2012SECK	APT2012SECK	C	Orange	Water Clear	2.1	40	160	601	120°	.34	.27	.24	.18		
604-APT2012SEW/E	APT2012SEW/E	C	Red	White Diff.	2	40	200	621	120°	.41	.33	.28	.21		
604-APT2012SGC	APT2012SGC	C	Green	Water Clear	2.2	3	12	568	120°	.19	.15	.13	.10		
604-APT2012SRCPRV	APT2012SRCPRV	C	Red	Water Clear	1.9	20	80	640	120°	.21	.17	.14	.11		
604-APT2012SURC	APT2012SURC	C	Red	Water Clear	1.9	70	150	628	120°	.32	.25	.22	.16		
604-APT2012SURCK	APT2012SURCK	C	Red	Water Clear	1.9	50	100	630	120°	.25	.20	.17	.12		
604-APT2012SYCK	APT2012SYCK	C	Yellow	Water Clear	2	30	50	590	120°	.25	.20	.17	.12		
604-APT2012YC	APT2012YC	C	Yellow	Water Clear	2.1	2	8	588	120°	.19	.16	.13	.10		
604-APHCM2012CGCK	APHCM2012CGCK-F01	C	Green	Water Clear	2.1	10	50	574	110	.14	.11	.09	.07		
604-APHCM2012PBC	APHCM2012PBC/A	C	Blue	Water Clear	3.3	36	80	468	110	.52	.42	.37	.35		
604-APHCM2012SECK	APHCM2012SECK-F01	C	Orange	Water Clear	2.1	50	160	610	110	.14	.11	.09	.07		
604-APHCM2012SURCK	APHCM2012SURCK-F01	C	Red	Water Clear	1.95	50	150	650	110	.14	.11	.09	.07		
604-APHCM2012SYCK	APHCM2012SYCK-F01	C	Yellow	Water Clear	2	36	120	590	110	.14	.11	.09	.07		



1104

• Forward current: 20mA

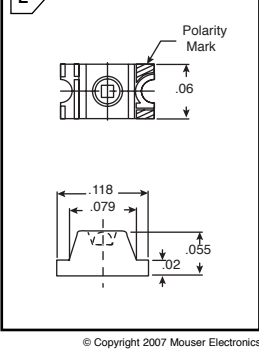
MOUSER STOCK NO.	Kingbright Part No.	Fig.	Color		Typ. Forward Voltage (V)	Luminous Intensity		Peak Wave-length (nm)	Viewing Angle	Price Each					CALL FOR QUOTE
			LED	Lens		Min.	Typ.			1	100	500	1000	2000+	
604-APA3010EC	APA3010EC	D	Red	Water Clear	2	5	12	625	120°	.21	.17	.15	.11		
604-APA3010PGC	APA3010PGC	D	Green	Water Clear	2.3	2	5	555	120°	.21	.17	.15	.14		
604-APA3010QGC	APA3010QGC	D	Green	Water Clear	2.2	3	12	565	120°	.21	.17	.15	.11		
604-APA3010SEC	APA3010SEC	D	Orange	Water Clear	2	50	300	601	120°	.41	.33	.28	.21		
604-APA3010SECK	APA3010SECK	D	Orange	Water Clear	2.1	80	200	601	120°	.30	.24	.20	.15		
604-APA3010SEW/E	APA3010SEW/E	D	Red	White Diff.	2	80	200	621	120°	.50	.40	.34	.25		
604-APA3010SRCPRV	APA3010SRCPRV	D	Red	Water Clear	1.9	20	60	640	120°	.23	.18	.16	.11		
604-APA3010SURCK	APA3010SURCK	D	Red	Water Clear	1.9	50	100	630	120°	.30	.24	.20	.15		
604-APA3010SYC	APA3010SYC	D	Yellow	Water Clear	2	40	60	588	120°	.41	.33	.28	.21		
604-APA3010SYCK	APA3010SYCK	D	Yellow	Water Clear	2	18	50	590	120°	.30	.24	.20	.15		
604-APA3010YC	APA3010YC	D	Yellow	Water Clear	2.1	3	5	588	120°	.21	.17	.15	.11		



1106

• Forward current: 20mA

MOUSER STOCK NO.	Kingbright Part No.	Fig.	Color		Typ. Forward Voltage (V)	Luminous Intensity		Peak Wave-length (nm)	Viewing Angle	Price Each					CALL FOR QUOTE
			LED	Lens		Min.	Typ.			1	100	500	1000	2000+	
604-APL3015EC	APL3015EC	E	Red	Water Clear	2	5	20	625	70°	.16	.13	.11	.08		
604-APL3015PGC	APL3015PGC	E	Green	Water Clear	2.3	2	5	555	70°	.16	.13	.11	.08		
604-APL3015PYC	APL3015PYC	E	Yellow	Water Clear	2.1	3	10	585	70°	.17	.13	.11	.08		
604-APL3015QGC	APL3015QGC	E	Green	Water Clear	2.2	4	20	565	70°	.16	.13	.11	.08		
604-APL3015QYC	APL3015QYC	E	Yellow	Water Clear	2.2	5	20	568	70°	.16	.13	.11	.08		
604-APL3015SEC	APL3015SEC	E	Orange	Water Clear	2	200	500	601	70°	.34	.27	.23	.17		
604-APL3015SGC	APL3015SGC	E	Green	Water Clear	2.2	5	20	568	70°	.16	.13	.11	.08		
604-APL3015SRCPRV	APL3015SRCPRV	E	Red	Water Clear	1.9	40	80	640	70°	.18	.15	.12	.09		
604-APL3015SURC	APL3015SURC	E	Red	Water Clear	1.9	100	250	628	70°	.34	.27	.23	.17		
604-APL3015SURCK	APL3015SURCK	E	Red	Water Clear	1.9	80	150	630	70°	.25	.20	.17	.12		
604-APL3015SYC	APL3015SYC	E	Yellow	Water Clear	2	40	150	588	70°	.34	.27	.23	.17		
604-APL3015SYCK	APL3015SYCK	E	Yellow	Water Clear	2	40	100	590	70°	.25	.20	.17	.12		
604-APL3015YC	APL3015YC	E	Yellow	Water Clear	2.1	3	10	588	70°	.17	.13	.11	.08		



© Copyright 2007 Mouser Electronics

© Copyright 2007 Mouser Electronics

