

# HARWIN M22 Series Fine Pitch Connectors

# HARWIN

## 2MM PITCH JUMPER SOCKETS

For use with any M22 unshrouded pin headers.

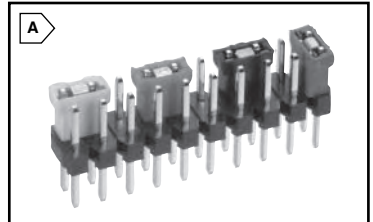
- Can be fitted and removed by hand, giving an alternative to DIP Switches for on-board programming.
- Open top for use with test probe and end/side stackable
- Moulding: Glass filled Polyester UL94V-0
- Temperature Range: -40°C to 85°C
- Current Rating: 2 Amps
- Voltage: 250V AC/DC
- RoHS Compliant per Harwin Documentation



RoHS Compliant

For quantities of 50 and up, call for quote.

MOUSER STOCK NO.	Harwin Part No.	Fig.	Plating	Color	Contact	Price Each		
						1	10	25
855-M22-1900046	M22-1900046	A	Tin	Black	Beryllium Copper	.14	.13	.12
855-M22-1910046	M22-1910046	A	Tin	Blue	Beryllium Copper	.14	.13	.12
855-M22-1920046	M22-1920046	A	Tin	Red	Beryllium Copper	.14	.13	.12
855-M22-1900005	M22-1900005	A	Gold	Black	Beryllium Copper	.14	.13	.12
855-M22-1910005	M22-1910005	A	Gold	Blue	Beryllium Copper	.14	.13	.12
855-M22-1920005	M22-1920005	A	Gold	Red	Beryllium Copper	.14	.13	.12



## 2MM FINE PITCH SOCKETS

- PC Tail Sockets have 2.6mm tails.
- Moulding Material: High Temperature Plastic, UL94V-0
- Contact Material: Phosphor Bronze
- Current Rating: 2A per single contact, 1A all contacts
- Plating: Gold, Tin

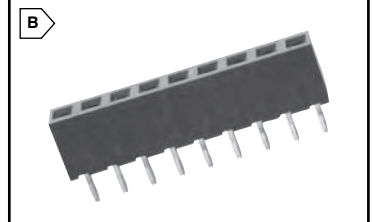
- Voltage Rating: 250V AC/DC
- Contact Resistance: 30 mΩ max
- Insulation resistance: 100 MΩ min
- RoHS Compliant per Harwin Documentation



RoHS Compliant

For quantities of 50 and up, call for quote.

MOUSER STOCK NO.	Harwin Part No.	Fig.	No. of Pos.	Mould Height (mm)	Plating	Description	Price Each		
							1	10	25
855-M22-7130342	M22-7130342	B	3	4.4	Gold, Tin	Single Row	.37	.34	.30
855-M22-7130442	M22-7130442	B	4	4.4	Gold, Tin	Single Row	.50	.45	.40
855-M22-7130542	M22-7130542	B	5	4.4	Gold, Tin	Single Row	.62	.56	.50
855-M22-7130642	M22-7130642	B	6	4.4	Gold, Tin	Single Row	.74	.68	.59
855-M22-7131042	M22-7131042	B	10	4.4	Gold, Tin	Single Row	1.24	1.13	.99
855-M22-7131442	M22-7131442	B	14	4.4	Gold, Tin	Single Row	1.74	1.58	1.39
855-M22-7132042	M22-7132042	B	20	4.4	Gold, Tin	Single Row	2.48	2.25	1.98
855-M22-6360346	M22-6360346	C	6	2.3	Tin	Double Row/Dual Entry, SMT	1.39	1.26	1.20
855-M22-6360446	M22-6360446	C	8	2.3	Tin	Double Row/Dual Entry, SMT	1.78	1.54	1.46
855-M22-6360546	M22-6360546	C	10	2.3	Tin	Double Row/Dual Entry, SMT	2.18	1.98	1.88
855-M22-6360646	M22-6360646	C	12	2.3	Tin	Double Row/Dual Entry, SMT	2.62	2.38	2.26
855-M22-6361046	M22-6361046	C	20	2.3	Tin	Double Row/Dual Entry, SMT	4.35	3.95	3.76
855-M22-6361446	M22-6361446	C	28	2.3	Tin	Double Row/Dual Entry, SMT	6.07	5.52	5.25
855-M22-6362046	M22-6362046	C	40	2.3	Tin	Double Row/Dual Entry, SMT	8.67	7.88	7.49
855-M22-7140342	M22-7140342	D	6	4.4	Gold, Tin	Double Row	.49	.45	.39
855-M22-7140442	M22-7140442	D	8	4.4	Gold, Tin	Double Row	.66	.60	.53
855-M22-7140542	M22-7140542	D	10	4.4	Gold, Tin	Double Row	.82	.75	.66
855-M22-7140642	M22-7140642	D	12	4.4	Gold, Tin	Double Row	.99	.90	.79
855-M22-7141042	M22-7141042	D	20	4.4	Gold, Tin	Double Row	1.65	1.50	1.32
855-M22-7141442	M22-7141442	D	28	4.4	Gold, Tin	Double Row	2.30	2.09	1.84
855-M22-7142042	M22-7142042	D	40	4.4	Gold, Tin	Double Row	3.29	2.99	2.63
855-M22-6340342	M22-6340342	E	6	4.5	Gold, Tin	Double Row, SMT	.62	.57	.54
855-M22-6340442	M22-6340442	E	8	4.5	Gold, Tin	Double Row, SMT	.82	.74	.71
855-M22-6340542	M22-6340542	E	10	4.5	Gold, Tin	Double Row, SMT	.91	.83	.78
855-M22-6340642	M22-6340642	E	12	4.5	Gold, Tin	Double Row, SMT	.99	.90	.86
855-M22-6341042	M22-6341042	E	20	4.5	Gold, Tin	Double Row, SMT	1.59	1.45	1.38
855-M22-6341442	M22-6341442	E	28	4.5	Gold, Tin	Double Row, SMT	2.19	1.99	1.89
855-M22-6342042	M22-6342042	E	40	4.5	Gold, Tin	Double Row, SMT	3.09	2.81	2.67



## 2MM CRIMP HOUSINGS

- Moulding Material: Nylon, UL94V-2
- Contact Material: Phosphor Bronze
- Current Rating: 2A per single contact, 1A all contacts
- Plating: Gold, Tin

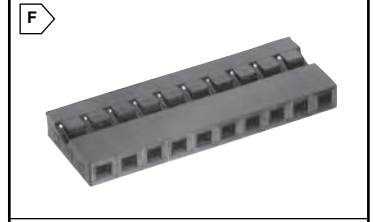
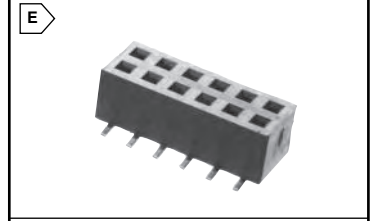
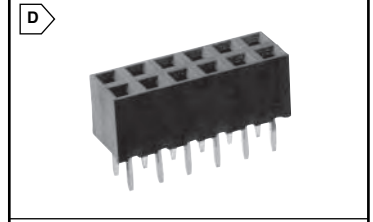
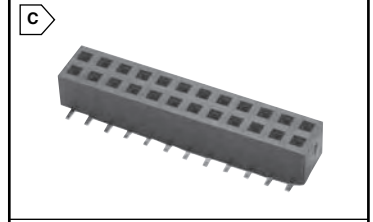
- Voltage Rating: 250V AC/DC
- Contact Resistance: 30 mΩ max
- Insulation resistance: 100 MΩ min
- RoHS Compliant per Harwin Documentation



RoHS Compliant

For quantities of 50 and up, call for quote.

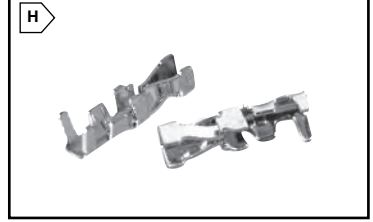
MOUSER STOCK NO.	Harwin Part No.	Fig.	No. of Positions	Description	Price Each		
					1	10	25
855-M22-3010200	M22-3010200	F	2	Single Row	.19	.18	.17
855-M22-3010300	M22-3010300	F	3	Single Row	.21	.20	.19
855-M22-3010400	M22-3010400	F	4	Single Row	.28	.25	.22
855-M22-3010500	M22-3010500	F	5	Single Row	.32	.29	.25
855-M22-3010600	M22-3010600	F	6	Single Row	.35	.32	.28
855-M22-3011000	M22-3011000	F	10	Single Row	.47	.43	.38
855-M22-3011400	M22-3011400	F	14	Single Row	.58	.53	.47
855-M22-3012000	M22-3012000	F	20	Single Row	.77	.70	.60
855-M22-3020200	M22-3020200	G	4	Double Row	.23	.21	.20
855-M22-3020300	M22-3020300	G	6	Double Row	.33	.30	.26
855-M22-3020400	M22-3020400	G	8	Double Row	.40	.36	.32
855-M22-3020500	M22-3020500	G	10	Double Row	.46	.42	.37
855-M22-3020600	M22-3020600	G	12	Double Row	.53	.48	.42
855-M22-3021000	M22-3021000	G	20	Double Row	.78	.71	.62
855-M22-3021400	M22-3021400	G	28	Double Row	1.05	.95	.84
855-M22-3022000	M22-3022000	G	40	Double Row	1.43	1.30	1.14



## 2MM FEMALE CRIMP CONTACTS

For quantities of 50 and up, call for quote.

MOUSER STOCK NO.	Harwin Part No.	Fig.	Plating	Wire Size	Price Each		
					1	10	25
855-M22-3050042	M22-3050042	H	Gold, Tin	24-30 AWG	.19	.12	.10
855-M22-3050046	M22-3050046	H	Tin	24-30 AWG	.23	.15	.12



## CRIMP TOOL FOR USE WITH M22 CONTACTS

MOUSER STOCK NO.	Harwin Part No.	Description	Price Each
855-Z22-020	Z22-020	2mm Hand Crimp Tool	288.25

NEW AT MOUSER

Rectangular Connectors

Harwin

NEW AT MOUSER

NEW AT MOUSER

NEW AT MOUSER

Rectangular Connectors

Harwin

NEW AT MOUSER

NEW AT MOUSER