

# BOURNS SMD Diodes



## SMD SWITCHING DIODES

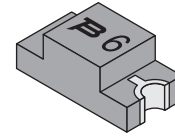
Bourns offers small-signal high-speed Switching Diodes for switching digital signal applications, in compact chip package size format, which offer PCB real estate savings and are considerably smaller than competitive parts. The diodes are lead-free with Cu/Ni/Au plated terminations and are compatible with lead-free manufacturing processes, conforming to many industry and government regulations on lead-free components. Bourns® Chip Diodes conform to JEDEC standards, easy to handle on standard pick and place equipment and their flat configuration makes roll away much more difficult.



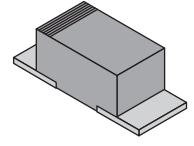
RoHS Compliant



LEAD-FREE



CD0805 Series Illustrated



CD1607 Series Illustrated

- Features:**
- Leadless
  - Lead-free
  - High speed
  - Low Profile Package
  - Very Low Forward Voltage Drop

- Applications:**
- Cellular phones
  - PDAs
  - Desktop PCs and notebooks
  - Digital cameras
  - MP3 players

**DIMENSIONS (mm)**

Package Size	Length ±0.2	Width ±0.2	Height (typ.)
0603	1.6	0.8	0.25
0805	2.0	1.2	0.40
1005	2.4	1.1	0.35
1206	3.0	1.4	0.50
1607	3.9	1.6	0.30

For quantities of 4000 and up, call for quote.

MOUSER STOCK NO.	Bourns Part No.	Package Size	Repetitive Peak Reverse Vt.	Reverse Voltage (V <sub>R</sub> )	Average Forward Current (mA)	R <sub>θ</sub> JL	Junction Temperature T <sub>J</sub> (°C)	Price Each				Piece Price By Reel	
								1	100	500	1000	Qty	Piece
<b>SMD-Small Signal Switching Diode</b>													
652-CD0603-S0180	CD0603-S0180	0603	90	80	100	150	-40 to +125	.08	.07	.06	.04	4000	.039
652-CD0603-S01575	CD0603-S01575	0603	100	75	150	150	-40 to +125	.08	.07	.06	.04	4000	.039
652-CD0603-S0180R	CD0603-S0180R	0603	90	80	100	150	-40 to +125	.10	.08	.06	.05	4000	.045
652-CD0805-S0180	CD0805-S0180	0805	90	80	100	300	-55 to +125	.06	.05	.04	.03	3000	.028
652-CD1005-S01575	CD1005-S01575	1005	100	75	150	300	-40 to +125	.06	.05	.04	.03	4000	.028
652-CD1005-S0180R	CD1005-S0180R	1005	90	80	100	300	-40 to +125	.07	.06	.05	.04	4000	.034
652-CD1206-S0180	CD1206-S0180	1206	90	80	100	300	-55 to +125	.06	.05	.04	.03	3000	.028
652-CD1206-S01575	CD1206-S01575	1206	100	75	150	350	-55 to +125	.06	.05	.04	.03	3000	.028
652-CD1206-S0180R	CD1206-S0180R	1206	90	80	100	300	-55 to +125	.07	.06	.04	.03	3000	.029
<b>SMD-Small Signal Schottky Barrier Diode</b>													
652-CD0603-B00340	CD0603-B00340	0603	45	40	30	150	-40 to +125	.12	.10	.08	.06	4000	.056
652-CD0603-B0130L	CD0603-B0130L	0603	35	30	100	150	-40 to +125	.15	.13	.10	.08	4000	.071
652-CD0603-B0145	CD0603-B0145	0603	50	45	100	150	-40 to +125	.15	.13	.10	.08	4000	.071
652-CD0603-B0230	CD0603-B0230	0603	35	30	200	150	-40 to +125	.17	.14	.11	.08	4000	.077
652-CD0603-B0245	CD0603-B0245	0603	50	45	200	150	-40 to +125	.17	.14	.11	.08	4000	.077
652-CD0805-B00340	CD0805-B00340	0805	45	40	30	200	-40 to +125	.11	.09	.07	.05	3000	.049
652-CD1005-B0130L	CD1005-B0130L	1005	35	30	100	250	-40 to +125	.14	.12	.09	.07	4000	.064
652-CD1005-B0145	CD1005-B0145	1005	50	45	100	250	-40 to +125	.14	.12	.09	.07	4000	.064
652-CD1005-B0230	CD1005-B0230	1005	35	30	200	250	-40 to +125	.15	.13	.10	.08	4000	.071
652-CD1005-B0245	CD1005-B0245	1005	50	45	200	250	-40 to +125	.15	.13	.10	.08	4000	.071
652-CD1607-B120	CD1607-B120	1607	20	20	1000	---	-55 to +125	.24	.20	.16	.12	2500	.112
652-CD1607-B120L	CD1607-B120L	1607	20	20	1000	---	-55 to +125	.27	.23	.18	.14	2500	.126
652-CD1607-B140	CD1607-B140	1607	40	40	1000	---	-55 to +125	.24	.20	.16	.12	2500	.112
652-CD1607-B140L	CD1607-B140L	1607	40	40	1000	---	-55 to +125	.27	.23	.18	.14	2500	.126

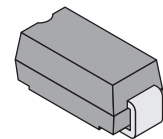
## SMD SCHOTTKY RECTIFIER DIODES

Bourns offers Schottky Rectifier Diodes for rectification applications, in compact chip package DO-214AC (SMA) size format, which offer PCB real estate savings and are considerably smaller than competitive parts. The Schottky Rectifier Diodes offer a forward current of 1 A to 3 A with a choice of repetitive peak reverse voltage of 20 V up to 100 V.

- Features:**
- SMA package
  - Surface mount
  - Very low forward voltage drop



LEAD-FREE



For quantities of 4000 and up, call for quote.

MOUSER STOCK NO.	Bourns Part No.	Package Size	Maximum RMS Voltage	Reverse Voltage (V <sub>R</sub> )	Forward Current (A)	R <sub>θ</sub> JL	Junction Temperature T <sub>J</sub> (°C)	Price Each				Piece Price By Reel	
								1	100	500	1000	Qty	Piece
652-CD214A-B120	CD214A-B120	DO-214AC	14	20	1.0	20	-55 to +125	.14	.11	.09	.07	5000	.063
652-CD214A-B130	CD214A-B130	DO-214AC	21	30	1.0	20	-55 to +125	.14	.11	.09	.07	5000	.063
652-CD214A-B130L	CD214A-B130L	DO-214AC	21	30	1.0	35	-55 to +125	.29	.24	.19	.14	5000	.133
652-CD214A-B140	CD214A-B140	DO-214AC	28	40	1.0	20	-55 to +125	.14	.11	.09	.07	5000	.063
652-CD214A-B150	CD214A-B150	DO-214AC	38	50	1.0	20	-55 to +125	.14	.11	.09	.07	5000	.063
652-CD214A-B160	CD214A-B160	DO-214AC	42	60	1.0	20	-55 to +125	.14	.11	.09	.07	5000	.063
652-CD214A-B170	CD214A-B170	DO-214AC	49	70	1.0	25	-55 to +125	.24	.20	.16	.12	5000	.112
652-CD214A-B180	CD214A-B180	DO-214AC	56	80	1.0	25	-55 to +125	.24	.20	.16	.12	5000	.112
652-CD214A-B1100	CD214A-B1100	DO-214AC	70	100	1.0	25	-55 to +125	.24	.20	.16	.12	5000	.112
652-CD214A-B220	CD214A-B220	DO-214AC	14	20	2.0	15	-55 to +125	.23	.19	.15	.11	5000	.105
652-CD214A-B230	CD214A-B230	DO-214AC	21	30	2.0	15	-55 to +125	.23	.19	.15	.11	5000	.105
652-CD214A-B240	CD214A-B240	DO-214AC	28	40	2.0	15	-55 to +125	.23	.19	.15	.11	5000	.105
652-CD214A-B240L	CD214A-B240L	DO-214AC	28	40	2.0	18	-55 to +125	.29	.24	.19	.14	5000	.133
652-CD214A-B250	CD214A-B250	DO-214AC	35	50	2.0	15	-55 to +125	.24	.20	.16	.12	5000	.112
652-CD214A-B260	CD214A-B260	DO-214AC	42	60	2.0	15	-55 to +125	.24	.20	.16	.12	5000	.112
652-CD214A-B320	CD214A-B320	DO-214AC	14	20	3.0	10	-55 to +125	.32	.27	.22	.16	5000	.151
652-CD214A-B330	CD214A-B330	DO-214AC	21	30	3.0	10	-55 to +125	.32	.27	.22	.16	5000	.151
652-CD214A-B340	CD214A-B340	DO-214AC	28	40	3.0	10	-55 to +125	.32	.27	.22	.16	5000	.151
652-CD214A-B340L	CD214A-B340L	DO-214AC	28	40	3.0	20	-55 to +125	.35	.29	.23	.18	5000	.164
652-CD214A-B350	CD214A-B350	DO-214AC	35	50	3.0	10	-55 to +125	.35	.29	.23	.18	5000	.164
652-CD214A-B360	CD214A-B360	DO-214AC	42	60	3.0	10	-55 to +125	.35	.29	.23	.18	5000	.164