

NETBURNER Serial-to-Ethernet Modules



32-BIT SERIAL-TO-ETHERNET PROCESSOR BOARDS

If your application requires TTL level serial ports, just plug in the SB70 and go! If you require RS-232, RS-422 or RS-485, please see the SB72 Ethernet to Serial Processor Board.

SB70 Processor Board

The NetBurner SB70 is designed for applications that require a high performance/low cost 10/100 Ethernet interface to serial devices. The SB70 comes preloaded with software to translate serial and Ethernet data, and is configurable through any web browser. The SB70 application code can be customized to any specific application requirements with the NetBurner Network Development Kit.

SB70 Features:

- Instantly allows any serial device to communicate over a network or the Internet
- The SB70 can be used as a single board computer for custom applications.
- Includes TCP/IP, Telnet, SNMP, and Web Server (HTTP)
- Supports TTL, and QSPI* serial devices
- Web page configuration
- Powerful 32-bit Motorola ColdFire processor with integrated 10/100 Ethernet MAC
- Development kit required for QSPI

Development Kit Contents:

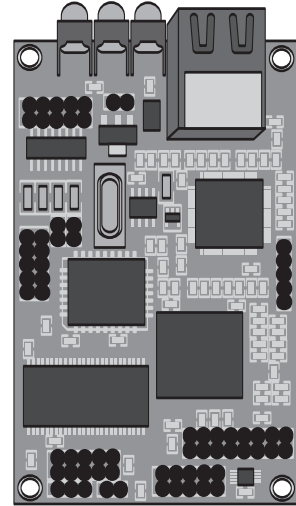
- SBXX Processor Board
- Adapter board to assist in development. It is not required to operate. The adapter board includes a switching power supply, RS-232 level shifters and two DB-9 connectors.
- CD-ROM containing source code, development tools, manuals and documentation.

SB72 Processor Board

The NetBurner SB72 is designed for applications that require a high performance/low cost 10/100 Ethernet interface to serial devices. The SB72 comes preloaded with software to translate serial and Ethernet data, and is configurable through any web browser. The SB72 application code can be customized to any specific application requirements with the NetBurner Network Development Kit. The SB72 is similar to the SB70, with the addition of RS-232 and RS-485 level shifters.

SB72 Features:

- Instantly allows any serial device to communicate over a network or the Internet
- The SB72 can be used as a single board computer for custom applications.
- Includes TCP/IP, Telnet, SNMP, and Web Server (HTTP)
- Supports RS-232, RS-485/422, TTL, and QSPI* serial devices
- Web page configuration
- Powerful 32-bit Motorola ColdFire processor with integrated 10/100 Ethernet MAC
- Development kit required for QSPI
- Cross-wired and straight-through twisted pair network cables
- Serial cable
- 12 VDC power supply (US and Canada only)



RoHS Compliant

SB70 Processor Board

MOUSER STOCK NO.	Netburner Part No.	Price Each		
		1	100	1000
820-SB70-100CR	SB70-100CR	79.00	69.00	59.00

SB70 Development Kit

MOUSER STOCK NO.	Netburner Part No.	Price Each
820-NNDK-SB70-KIT	NNDK-SB70-KIT	99.00

SB72 Processor Board

MOUSER STOCK NO.	Netburner Part No.	Price Each		
		1	100	1000
820-SB72-300CR	SB72-300CR	139.00	99.00	89.00

MOD72 Development Kit

MOUSER STOCK NO.	Netburner Part No.	Price Each
820-NNDK-SB72-KIT	NNDK-SB72-KIT	149.00

SB72-EX DUAL PORT SERIAL-TO-ETHERNET EXTERNAL DEVICE

SB72-EX to Network-Enable Existing Applications:

The SB72-EX network-enables serial devices right out of the box. No programming or development is required; the SB72-EX is pre-programmed to convert RS-232, RS-422, RS-485, and TTL data to Ethernet, enabling communication with the serial device over a network or the Internet. The onboard web server provides easy device configuration using a standard web server.

Hardware Specifications:

- 10/100BaseT with RJ-45 connector
- 32-bit Motorola ColdFire 5272 with integrated 10/100 Ethernet
- 2MBytes flash, 8MBytes of SDRAM
- Power: 12V, 500mA
- Operating Temperature: 0° to 70°C
- Dimensions: 4.2" x 3.0"
- Weight 5 oz
- UL and CUL approvals
- LED's: Link, Speed/Data, Power
- The 2 UARTS can be configured:
 - Two RS-232 ports
 - One RS-232 port, one RS-485/422 port (full or half duplex)

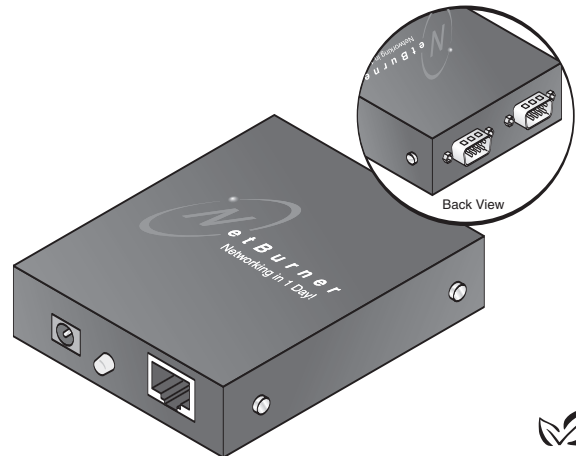
Software Specifications:

- Configuration through web browser, telnet, SNMP, or NetBurner IP Setup utility
- Password protection
- Firmware updates through network or serial connections

Network Protocols Supported:

- ARP, DHCP, BOOTP, TCP, UDP, ICMP, Telnet, HTTP, SNMP

Note: additional protocols supported with development kit.



RoHS Compliant

SB72-EX DEVICE

MOUSER STOCK NO.	Netburner Part No.	Price Each		
		1	100	1000
820-SB72-EX-100CR	SB72-EX-100CR	179.00	138.00	119.00

SB72-EX DEVICE DEVELOPMENT KIT

MOUSER STOCK NO.	Netburner Part No.	Price Each
820-NNDK-SB72EX-KIT	NNDK-SB72EX-KIT	299.00

Development Kit

The SB72-EX Network Development kit contains everything you need to create custom applications on your SB72-EX device: Real-time operating system, TCP/IP Stack, Web Server, C/C++ compiler and linker, Integrated Development Environment (IDE), Debugger, and product deployment tools.

Development Kit Contents:

- SB72-EX Device Box
- CD-ROM containing source code, development tools, manuals, and documentation
- Cross-wired and straight-through twisted pair network cables
- Serial cable
- 12 VDC power supply (US and Canada only)

© Copyright 2007 Mouser Electronics

© Copyright 2007 Mouser Electronics