

VISHAY / SFERNICE Precision Potentiometers

MODEL 830 THREE TURN WIREWOUND

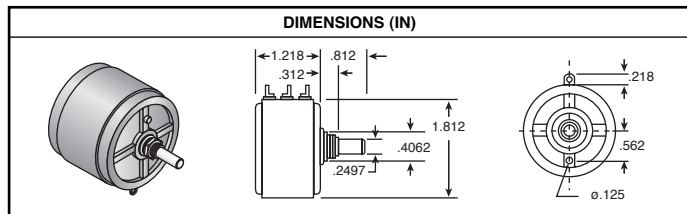
Electrical Specifications:

- Tolerance: ±3%, 200Ω ≤ Rt ≤ 150KΩ
- Power rating: 3W @ 40°C derating to 0W @ 125°C
- Electrical travel: 1,080° ±4°-0°

Physical Specifications:

- Temperature: -55°C to +125°C
- Rotational Life: 500,000 shaft revolutions
- Ganging: 2 sections max.
- 3 turn 3 watts

DIMENSIONS (IN)



For quantities of 25 and up, call for quote.

MOUSER STOCK NO.	Value (Ω)	Resistance %	Temp. Coeff. PPM/°C	Price Each		
				1	5	10
594-830-1102	1K	0.050	110	43.99	42.41	41.35
594-830-1202	2K	0.047	20	43.99	42.41	41.35
594-830-1502	5K	0.035	20	43.99	42.41	41.35
594-830-1103	10K	0.029	20	43.99	42.41	41.35
594-830-1203	20K	0.024	20	60.92	58.73	57.27
594-830-1503	50K	0.017	20	60.92	58.73	57.27

MODEL 860 TEN TURN WIREWOUND

Physical Specifications:

- Temperature: -55°C to +125°C
- Rotational Life: 500,000 shaft revolutions
- Ganging: 2 sections max.

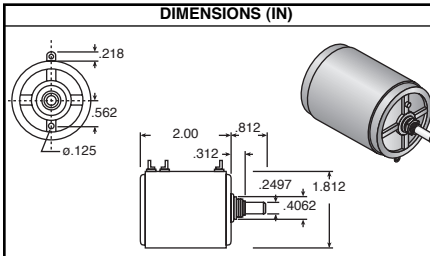
Electrical Specifications:

- Tolerance: ±3%, 200Ω ≤ Rt ≤ 500KΩ
- Power rating: 8W @ 40°C derating to 0W @ 125°C
- Electrical travel: 3,600° ±4°-0°

Price Each

1	5	10	25
51.44	48.23	46.62	45.00

DIMENSIONS (IN)



Value (Ω)	MOUSER STOCK NO.
500	594-860-1501
1K	594-860-1102
5K	594-860-1502
10K	594-860-1103

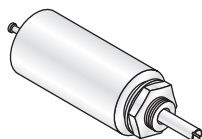
MODEL 162 1/2" TEN TURN PRECISION WIREWOUND

Specifications:

- Body (LxD): 1.00" x 0.50"
- Shaft (LxD): .687" x .0935"
- Power rating: 2.0W @ 40°C derated to 0W @ 125°C
- Linearity: ±0.3%
- Resistance tolerance: ±5%
- Temperature coefficient: ±20ppm/°C
- Temperature range: -55°C to +125°C
- Electrical rotation: 3600° ±15° - 0°

For quantities of 25 and up, call for quote.

MOUSER STOCK NO.	Values (Ω)	Price Each		
		1	5	10
594-16211102	1K	70.56	66.15	63.95
594-16211103	10K	70.56	66.15	63.95
594-16211104	100K	85.04	79.73	77.07

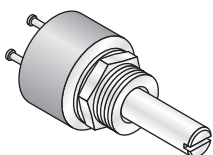


MODEL 140 1/2" SINGLE-TURN PRECISION WIREWOUND

Specifications:

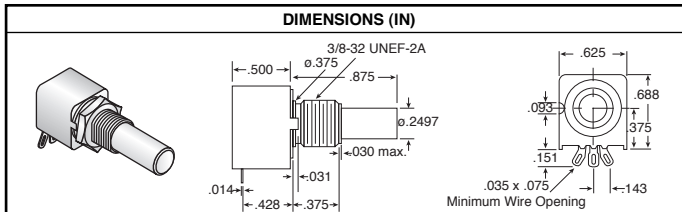
- Body (LxD): .305" x .500"
- Shaft (LxD): .70" x 0.1248"
- Power rating: 2.0W @ 40°C derated to 0W @ 125°C
- Linearity: ±1.0%
- Resistance tolerance: ±5%
- Temperature coefficient: ±20ppm/°C
- Temperature range: -55°C to +125°C
- Electrical rotation: 320° ±5°

MOUSER STOCK NO.	Values (Ω)	Price Each			
		1	5	10	25
594-14000102	1K	36.29	34.02	32.89	31.75
594-14000502	5K	36.29	34.02	32.89	31.75
594-14000103	10K	36.29	34.02	32.89	31.75
594-14000203	20K	42.24	39.60	38.28	36.96



MODEL 657 5/8" SEALED SINGLE-TURN PRECISION CONDUCTIVE PLASTIC ON ALUMINA SUBSTRATE

DIMENSIONS (IN)



Mechanical Specifications:

- Rotation: 250° ±2°
- Stop strength: 10 in.-lb. max.

Features:

- Conductive plastic on alumina substrate
- Sealed

Electrical Specifications:

- Tolerance: standard ±20%
- Linearity: ±5%
- Rotation: 240° ±4°
- Power rating: 1.0W @ 85°C

Price Each			
1	5	10	25
13.95	10.95	8.50	7.75

Environmental:

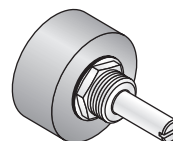
- Rotational life: 1 million cycles
- Operating temperature: -40°C to +125°C

Value (Ω)	MOUSER STOCK NO.
1K	594-657-0-0-102
2K	594-657-0-0-202
5K	594-657-0-0-502
10K	594-657-0-0-103
20K	594-657-0-0-203
50K	594-657-0-0-503
100K	594-657-0-0-104

MODEL 357 7/8" SINGLE TURN CONDUCTIVE PLASTIC

Specifications:

- Plain and slotted shaft available
- Power rating: 1.0 W @ 70°C derated to 0 W @ 125°C
- Linearity: ±2%
- Tolerance: ±20°
- Rotation: 360° continuous
- Nut and washer included



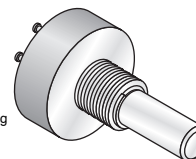
Price Each			
1	5	10	25
14.88	11.90	10.71	9.52

Value (Ω)	MOUSER STOCK NO.
1K	594-357-00-102
2K	594-357-00-202
5K	594-357-00-502
10K	594-357-00-103

MODEL 157 PRECISION - SINGLE TURN INDUSTRIAL POTENTIOMETER

Specifications:

- Power rating: 1.0 W @ 40°C derated to 0 W @ 125°C
- Resistance tolerance: ±20°
- Temperature coefficient: ±600ppm/°C
- Electrical rotation: 340° ±4°
- Rugged one piece metal housing
- No mechanical stops
- Nut and washer included on bushing mount



Price Each			
1	5	10	25
18.53	14.82	13.34	11.86

Value (Ω)	MOUSER STOCK NO.
1K	594-15711102
2K	594-15711202
5K	594-15711502
10K	594-15711103
20K	594-15711203
50K	594-15711503

MODEL 534/536 7/8" TEN TURN PRECISION WIREWOUND

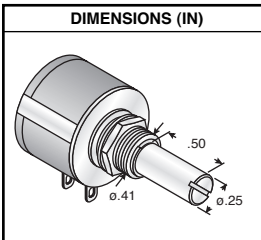
Specifications:

- Power rating: 3.09W @ 40°C derated linearly to 0W @ 125°C
- Linearity: ±0.25%
- Tolerance: ±5%
- Temperature coefficient: ±20ppm/°C
- Temperature range: -55°C to +125°C

Features:

- High power rating
- Rugged integrated construction
- Superior stop strength

DIMENSIONS (IN)



Metal Shaft

For quantities of 25 and up, call for quote.

MOUSER STOCK NO.	Values (Ω)	Price Each		
		1	5	10
594-53411101	100	8.67	8.13	7.86
594-53411201	200	8.67	8.13	7.86
594-53411501	500	8.67	8.13	7.86
594-53411102	1K	8.67	8.13	7.86
594-53411202	2K	8.67	8.13	7.86
594-53411502	5K	8.67	8.13	7.86
594-53411103	10K	8.67	8.13	7.86
594-53411203	20K	8.67	8.13	7.86
594-53411503	50K	11.95	11.21	10.83
594-53411104	100K	11.95	11.21	10.83

Plastic Shaft

594-53611101	100	8.64	8.10	7.83
594-53611201	200	8.64	8.10	7.83
594-53611501	500	8.64	8.10	7.83
594-53611102	1K	8.64	8.10	7.83
594-53611202	2K	8.64	8.10	7.83
594-53611502	5K	8.64	8.10	7.83
594-53611103	10K	8.64	8.10	7.83
594-53611203	20K	8.64	8.10	7.83
594-53611503	50K	12.48	11.70	11.31
594-53611104	100K	12.48	11.70	11.31

PRECISION DIALS METAL SHAFT

Features:

- Satin chrome finish
- Large, easy to read numbers
- Positive brake action
- Shaft bore is .250"

For quantities 50 and up, call for quote.

MOUSER STOCK NO.	Vishay Part No.	Fig.	No. of Turns	Minor Scale	Size (In.)		Price Each			
					W	H	1	5	10	25
594-11111	011-1-11	A	10	1/50	1.0	.826	18.25	17.45	16.77	16.18
594-18111	018-1-11	A	15	1/50	.875	.875	10.60	10.20	9.75	9.25
594-21111	021-1-11	A	15	1/100	1.81	1.0	19.00	18.20	17.51	16.89
594-15111	015-1-11	B	10	1/100	1.0	1.75	17.04	16.38	15.78	15.21

