

# DIALIGHT LED Panel Mount Indicators



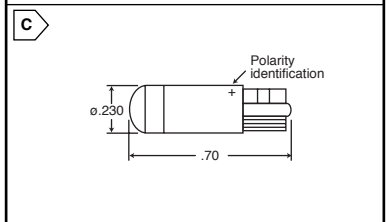
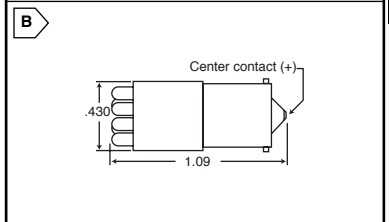
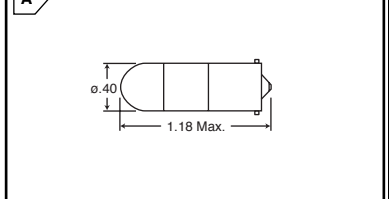
## Dialight INCANDESCENT REPLACEMENT LAMPS

For quantities of 2,000 and up, call for quote.

RoHS Compliant

MOUSER STOCK NO.	Dialight Part No.	Fig.	Color	Peak Wave-length	Voltage (Max)	Current (mA)	mcd	Price Each			
								1	10	50	100
<b>Multi-Chip Bayonet Base (T-3 1/4)</b>											
645-585-4123	585-4123	A	Red	630	14	30	38	9.90	8.25	7.43	6.60
645-585-4223	585-4223	A	Ultra Red	660	14	30	60	10.50	8.75	7.88	7.00
645-585-4323	585-4323	A	Green	565	14	28	70	9.90	8.25	7.43	6.60
645-585-4125	585-4125	A	Red	630	28	15	38	9.90	8.25	7.43	6.60
645-585-4225	585-4225	A	Ultra Red	660	28	16	64	10.50	8.75	7.88	7.00
645-585-4325	585-4325	A	Green	565	28	15	75	9.90	8.25	7.43	6.60
<b>Cluster Bayonet Base (T-3 1/4)</b>											
645-585-5223	585-5223	B	Ultra Red	660	14	40	480	22.50	18.75	16.88	15.00
645-585-5323	585-5323	B	Green	565	14	40	420	20.55	17.13	15.41	13.70
645-585-5423	585-5423	B	Yellow	525	14	40	420	20.55	17.13	15.41	13.70
645-585-5523	585-5523	B	Bright Yellow	592	14	60	1800	23.55	19.63	17.66	15.70
645-585-5225	585-5225	B	Ultra Red	660	28	20	560	22.50	18.75	16.88	15.00
645-585-5325	585-5325	B	Green	565	28	20	490	20.55	17.13	15.41	13.70
<b>Multi-Chip Wedge Base (T-1 3/4)</b>											
645-585-2223	585-2223	C	Ultra Red	660	14	30	60	9.00	7.50	6.75	6.00
645-585-2323	585-2323	C	Green	565	14	28	70	8.55	7.13	6.41	5.70
645-585-2423	585-2423	C	Yellow	585	14	30	23	8.55	7.13	6.41	5.70
645-585-2225	585-2225	C	Ultra Red	660	28	16	64	9.00	7.50	6.75	6.00
645-585-2325	585-2325	C	Green	565	28	15	75	8.55	7.13	6.41	5.70
645-585-2425	585-2425	C	Yellow	585	28	15	23	8.55	7.13	6.41	5.70

### DIMENSIONS IN.

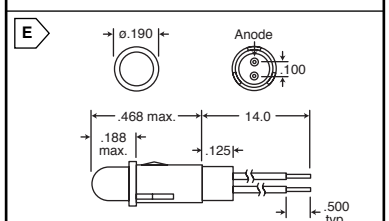
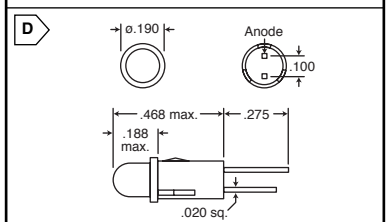


## Dialight LED SNAP-IN PANEL MOUNT INDICATORS .156" MOUNTING HOLE

For quantities of 2,000 and up, call for quote.

RoHS Compliant

MOUSER STOCK NO.	Dialight Part No.	Fig.	Color	Voltage (Max)	Current (mA)	mcd	Price Each			
							1	10	50	100
<b>Straight Terminals</b>										
645-558-0101-001F	558-0101-001F	D	Red	2	10	10	.90	.72	.63	.57
645-558-1101-001F	558-1101-001F	D	Red	1.8	2	1.8	1.20	.96	.84	.76
645-558-0301-001F	558-0301-001F	D	Yellow	2.1	10	6.3	.90	.72	.63	.57
645-558-1201-001F	558-1201-001F	D	Yellow	1.9	2	1.6	1.20	.96	.84	.76
645-558-0201-001F	558-0201-001F	D	Green	2.1	10	16	.90	.72	.63	.57
645-558-1301-001F	558-1301-001F	D	Green	1.8	2	1.6	1.20	.96	.84	.76
645-558-3001-001F	558-3001-001F	D	R/G	5/5	2/2	5/5	1.86	1.49	1.30	1.18
645-558-3201-001F	558-3201-001F	D	Y/G	2.1/2.1	20	6.3/4.3	1.86	1.49	1.30	1.18
<b>14" Wire Leads</b>										
645-558-0101-007F	558-0101-007F	E	Red	2	10	10	1.74	1.39	1.22	1.10
645-558-1101-007F	558-1101-007F	E	Red	1.8	2	1.8	1.95	1.56	1.37	1.24
645-558-0102-007F	558-0102-007F	E	Red	5	10	4	2.10	1.68	1.47	1.33
645-558-0302-007F	558-0302-007F	E	Yellow	5	10	8	2.10	1.68	1.47	1.33
645-558-1201-007F	558-1201-007F	E	Yellow	1.9	2	1.6	1.95	1.56	1.37	1.24
645-558-0201-007F	558-0201-007F	E	Green	2.1	10	16	1.74	1.39	1.22	1.10
645-558-1301-007F	558-1301-007F	E	Green	1.8	2	1.6	1.95	1.56	1.37	1.24
645-558-3001-007F	558-3001-007F	E	R/G	5/5	2/2	5/5	2.34	1.87	1.64	1.48
645-558-3201-007F	558-3201-007F	E	Y/G	2.1/2.1	20	5/15	2.34	1.87	1.64	1.48



## Dialight LED SNAP-IN PANEL MOUNT INDICATORS .250" MOUNTING HOLE

For quantities of 2,000 and up, call for quote.

RoHS Compliant

MOUSER STOCK NO.	Dialight Part No.	Fig.	Color	Voltage (Max)	Current (mA)	mcd	Price Each			
							1	10	50	100
<b>Standard Straight Terminals</b>										
645-559-0102-001F	559-0102-001F	F	Red	5	13	2	2.00	1.50	1.00	.88
645-559-1101-001F	559-1101-001F	F	Red	1.8	2	2	1.20	1.00	.80	.76
645-559-2101-001F	559-2101-001F	F	Red	2.2	10	7	1.05	.88	.70	.67
645-559-0302-001F	559-0302-001F	F	Yellow	5	10	8	2.00	1.50	1.00	.88
645-559-1201-001F	559-1201-001F	F	Yellow	1.9	2	1.8	1.20	1.00	.80	.76
645-559-2301-001F	559-2301-001F	F	Yellow	2.1	10	6.3	1.05	.88	.70	.67
645-559-0202-001F	559-0202-001F	F	Green	5	12	8	2.00	1.50	1.00	.88
645-559-1301-001F	559-1301-001F	F	Green	1.8	2	1.8	1.20	1.00	.80	.76
645-559-2201-001F	559-2201-001F	F	Green	2.1	10	10	1.05	.88	.70	.67
645-559-3001-001F	559-3001-001F	F	R/G	1.8/2.1	20	60/20	1.95	1.63	1.30	1.24
645-559-3101-001F	559-3101-001F	F	R/G	1.8/2.1	20	60/20	1.86	1.55	1.24	1.18
645-559-3201-001F	559-3201-001F	F	Y/G	2.1/2.1	20	8.7/8.7	1.86	1.55	1.24	1.18
<b>High Bright Diffused Straight Terminals</b>										
645-559-5101-001F	559-5101-001F	F	Red	2.1	20	34	1.14	.95	.76	.72
645-559-5301-001F	559-5301-001F	F	Yellow	2.2	20	34	1.14	.95	.76	.72
645-559-5201-001F	559-5201-001F	F	Green	2.2	20	34	1.14	.95	.76	.72
<b>Ultra Bright Diffused Straight Terminals</b>										
645-559-6101-001F	559-6101-001F	F	Red	1.9	20	2100	3.20	2.40	1.60	1.40
645-559-5901-001F	559-5901-001F	F	Amber	2.02	20	3100	3.20	2.40	1.60	1.40
645-559-6201-001F	559-6201-001F	F	Green	3.5	20	2200	9.30	6.20	5.43	4.65
645-559-6001-001F	559-6001-001F	F	Blue	3.6	20	650	9.30	6.20	5.43	4.65
645-559-6401-001F	559-6401-001F	F	White	3.5	20	600	9.30	6.20	5.43	4.65
<b>Standard 14" Wire Leads</b>										
645-559-0102-007F	559-0102-007F	G	Red	5	13	2	1.95	1.63	1.30	1.24
645-559-1101-007F	559-1101-007F	G	Red	1.8	2	2	1.80	1.50	1.20	1.14
645-559-2101-007F	559-2101-007F	G	Red	2.2	10	7	1.50	1.25	1.00	.95
645-559-0302-007F	559-0302-007F	G	Yellow	5	10	8	1.95	1.63	1.30	1.24
645-559-1201-007F	559-1201-007F	G	Yellow	1.8	2	1.8	1.80	1.50	1.20	1.14
645-559-2301-007F	559-2301-007F	G	Yellow	2.1	10	6.3	1.50	1.25	1.00	.95
645-559-0202-007F	559-0202-007F	G	Green	5	12	8	1.95	1.63	1.30	1.24
645-559-1301-007F	559-1301-007F	G	Green	1.8	2	1.8	1.80	1.50	1.20	1.14
645-559-2201-007F	559-2201-007F	G	Green	2.1	10	10	1.50	1.25	1.00	.95
645-559-3001-007F	559-3001-007F	G	R/G	1.7/2.0	20	60/40	2.31	1.93	1.54	1.46
645-559-3201-007F	559-3201-007F	G	Y/G	1.8/2.1	20	8.7/8.7	2.31	1.93	1.54	1.46
645-559-3501-007F	559-3501-007F	H	R/G	2.1/2.3	20	5.0/8.0	3.75	3.13	2.50	2.38
645-559-3601-007F	559-3601-007F	H	Y/G	1.6/1.6	10	5.0/8.0	3.75	3.13	2.50	2.38
<b>High Bright Diffused 14" Wire Leads</b>										
645-559-5101-007F	559-5101-007F	G	Red	2.1	20	34	1.65	1.38	1.10	1.05
645-559-5301-007F	559-5301-007F	G	Yellow	2.1	20	34	1.65	1.38	1.10	1.05
645-559-5201-007F	559-5201-007F	G	Green	2.1	20	34	1.65	1.38	1.10	1.05
<b>Ultra Bright Diffused 14" Wire Leads</b>										
645-559-6101-007F	559-6101-007F	G	Red	1.9	20	2100	2.85	2.38	1.90	1.81
645-559-5901-007F	559-5901-007F	G	Amber	2.02	20	3100	2.85	2.38	1.90	1.81
645-559-6201-007F	559-6201-007F	G	Green	3.5	20	2200	9.75	8.13	6.50	6.18
645-559-6001-007F	559-6001-007F	G	Blue	3.6	20	650	9.75	8.13	6.50	6.18
645-559-6401-007F	559-6401-007F	G	White	3.5	20	600	9.75	8.13	6.50	6.18

